



BCI[®]
BATIZ CONTROL INC.

This is...

Batiz Control Inc.

Who are we?



BCI
BATIZ CONTROL INC.

A Mexican company with more than 12 years of experience in the market, serving to the industry by developing solutions to satisfy our customer's needs and creating long term business relationship; looking for always exceeding expectations from those who trust us and give us the opportunity to be part of their productive strategies.

Nowadays, our metal-mechanic and powder coating processes have becoming a great alternative for those who take care of quality, delivery, cost and service in their subprocesses and maquila.



Our Facilities



BCI
BATIZ CONTROL INC.

- 2 plants with more than 20,000sqft
- 4 Forklifts 4, 5 and 8 Tons
- 2 Bridge cranes 5 Tons
- Painting (Powder coating) capacities
- Metal-mechanic workshop capacities
- Ground transportation for inbound or outbound

Backyard for shipping and receiving areas

Trailer dock for material handling

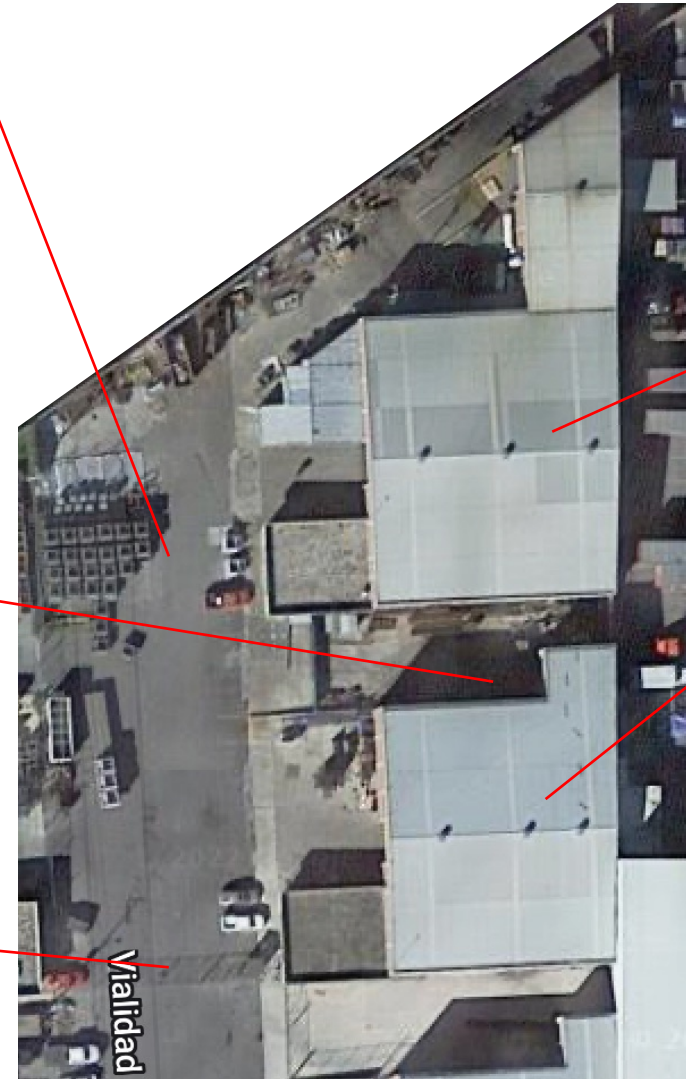
Controlled access to the plant

Plant 1 (Painting)

Total area: 10,500sqft

Plant 2 (Metal mechanic)

Total area: 9,900sqft



Our Capabilities



BCI
BATIZ CONTROL INC.

Plant 1 (Shotblasting & Painting)

1 Shotblasting booth
8ft x 40ft



2 Painting booths
Black & Yellow



2 Convection Ovens
8ft x 30ft



Our capabilities



BCI
BATIZ CONTROL INC.

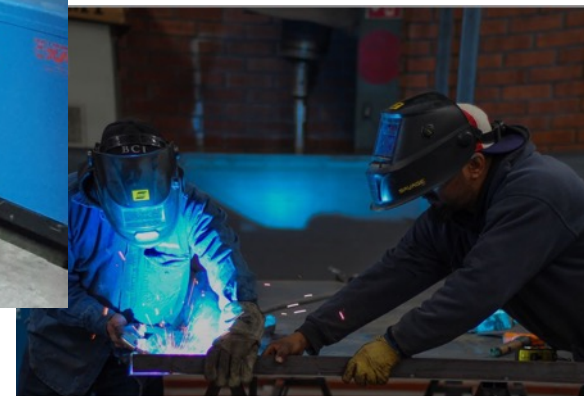
Plant 2 (Metal-Mechanic)

- 1 Bending machine
100T
- 2 Laser cutting machine
3030 5ft x 10ft (4000 watts)
1040 6ft x 13ft (6000 watts)
- 9 MIG Welding machines

- Laser machine 1040



- Laser machine 3030



Our Capabilities



BCI
BATIZ CONTROL INC.

Operations Support

- Quality



- Maintenance



- EH&S



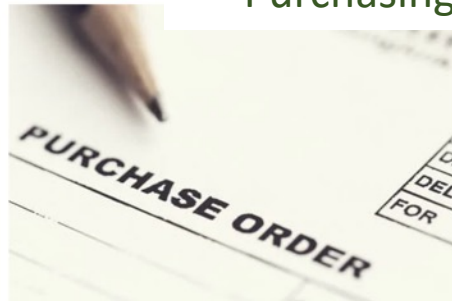
- Engineering



- Customer Service & Logistics



- Purchasing



Corporate Support

- HHRR



- Finance



Actual Plant Utilization



BCI
BATIZ CONTROL INC.

Plant 1 Installed Capacity Utilization

- Painting Booth 1 - 48%
- Painting Booth 2 - 36%

Plant 2 Installed Capacity Utilization

- Laser machine 1 - 70%
- Laser machine 2 - 40%
- Other equipment - 20%

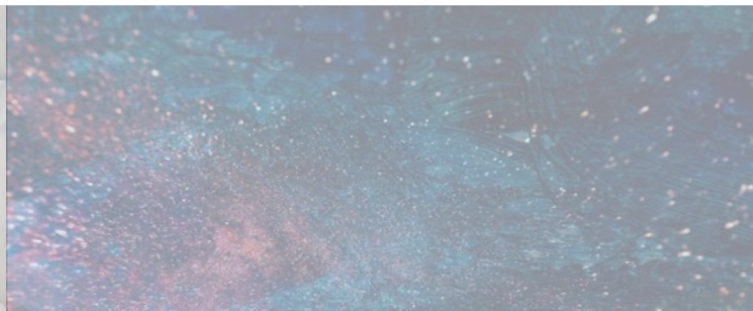


Our challenges



BCI
BATIZ CONTROL INC.

- QMS development for certification under ISO 9001:2015 Standard
 - Third party certification for end of 2023
- Operations optimization through VSM for vertical integration process
 - New piece of equipment for bending and welding
 - Internal logistics for getting effective material flow
- Increasing capacity for shotblasting
 - Building one more booth for painting line 2



New Investment

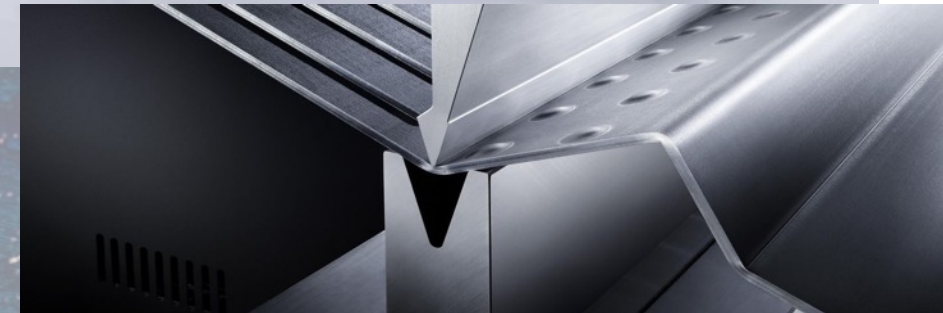


BCI
BATIZ CONTROL INC.

- Bigger laser cutting machine (6ft x 13ft)
 - Machine start up – **Complete**
 - Trials and final set up – **Completed**
 - **Machine already in production**



- Bending machine (1225) to arrive at plant in Jun 2023



New Investment

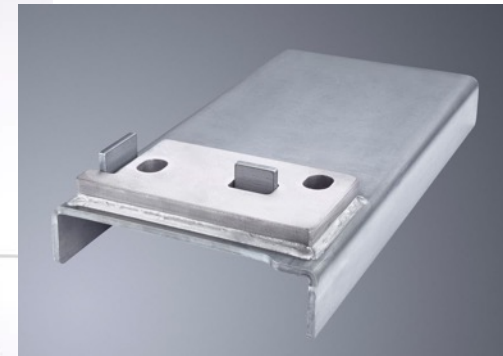
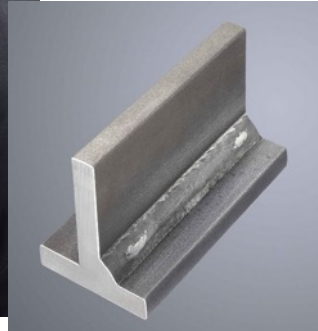


BCI
BATIZ CONTROL INC.

- Automated welding machine
TruArc weld 1000
 - Arriving at plant – Early May 2023
 - Trials and final set up – End of May 2023



Collaborative
robot UR10e with
six axes and force
moment sensor.



High-performance welding equipment from
Fronius: TPS 320i C PULSE



Thank you for your interest...



BCI
BATIZ CONTROL INC.

... it's always a pleasure,
...hope to see you soon

